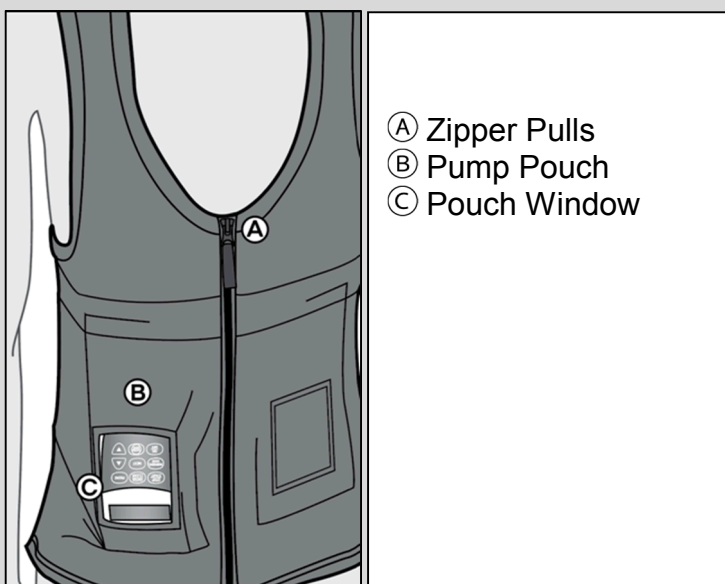


INSTRUCTIONS FOR USE

AbbVie Fitted Vest

For use with CADD-Legacy® 1400 pump

This guide pertains only to the use of the AbbVie Fitted Vest. For questions or problems, refer to these Instructions for Use or call support toll free at 1-844-386-4968.



About your Fitted Vest:

The Fitted Vest is designed to carry a CADD-Legacy® 1400 pump. The Fitted Vest is intended to be an undergarment layer that holds the pump close to the body. The Fitted Vest features a central zipper that rises fully up the torso (see Figure i).



Material Information and Care Instructions:

Material: 90% polyester, 10% spandex

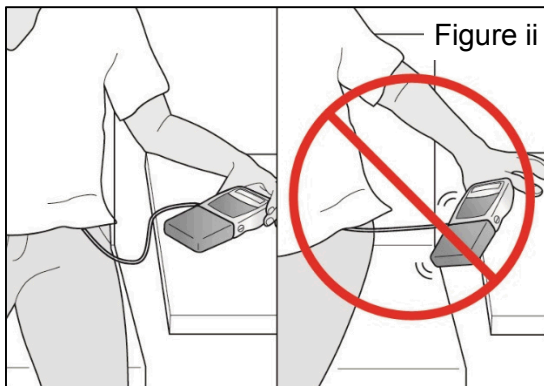
Care: Machine wash separately in cold water, hand wash, or dry clean.
Lay flat to dry.

Disposing of your AbbVie Fitted Vest:

Dispose of the device according to your local governing ordinances and recycling plans. Otherwise contact AbbVie for help with disposal. Each device is for single patient use only and cannot be re-sold or used on multiple patients.

Precautions:

- ⚠ **CAUTION:** When putting on the Fitted Vest, ensure the pump is resting on a flat surface, and will not fall (see Figure ii). **If the pump is not completely secure, it may fall and injure you or damage the pump.**



- ⚠ **CAUTION:** In the event the pump is dropped, and no noticeable injury is suffered, inspect the pump for damage. In the event of pump damage contact your healthcare provider.
- ⚠ **CAUTION:** The bottom of the adaptive zipper contains magnets. If you have any concerns, speak with your healthcare provider.

To begin using your Fitted Vest:

1) Put on the Fitted Vest:

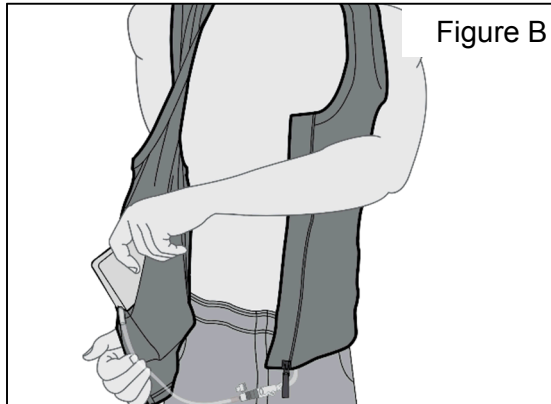
- ⚠ **CAUTION:** Make sure that the pump is stable on a flat surface and will not fall while you put on the Fitted Vest.
- ⚠ **CAUTION:** If you stand up to put on the vest, be sure the pump is secure so that it does not fall and injure you or cause damage to the pump.
 - a. Confirm that the Fitted Vest is correctly oriented with the openings of the front Pump Pockets on the inside of the Fitted Vest (see Figure A).



- b. Put on the Fitted Vest as you would a zippered jacket without the pump.

2) Insert the pump into the Fitted Vest:

- a. Place the pump into the Pump Pocket from the inside with the screen on the bottom and facing out (see Figure B).



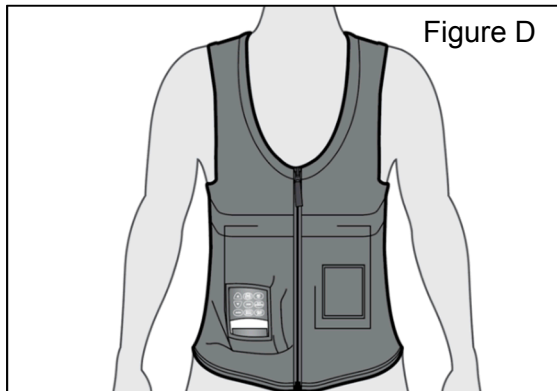
- b. Confirm that both the display and the keypad are visible through the Pocket Window.
- c. Make sure that the tubing is fully inside the vest and is not kinked while starting the zipper.
- d. Fully zip the Fitted Vest.

3) There are additional pockets that may be used to carry the pump (see Figure C).



4) Interact with the pump (when needed):

- a. You can access the pump's keypad through the Pocket Window (see Figure D).



- b. You may also access the pump screen and keypad by unzipping the Vest Zipper and removing the pump from the pocket.

To take off your Fitted Vest:

- 1) Unzip the Vest Zipper on the front of the Fitted Vest.
- 2) Remove the pump from the Pump Pocket:
 - a. Remove the pump from the Pump Pocket.
 - b. Place the pump on a flat surface.
- ⚠ **CAUTION:** Make sure that the pump is stable on a flat surface and will not fall while you take off the Fitted Vest.
- 3) Take off the Fitted Vest:

Remove the Fitted Vest as you would a jacket.

Explanation of Symbols (per ISO 15223-1):



Catalog number



Batch code



Manufacturer



Medical Device



Use-by date



rxabbvie.com

Consult *instructions for use* or
consult *electronic instructions for use*



Caution



0AV551-004-001, 0AV551-004-002, 0AV551-004-003,
0AV551-004-004, 0AV551-004-005, 0AV551-004-006,
0AV551-004-007, 0AV551-004-008, 0AV551-004-009



Manufactured for:
AbbVie Inc.
1 North Waukegan Road
North Chicago, IL 60064 USA



rxabbvie.com

rxabbvie.com