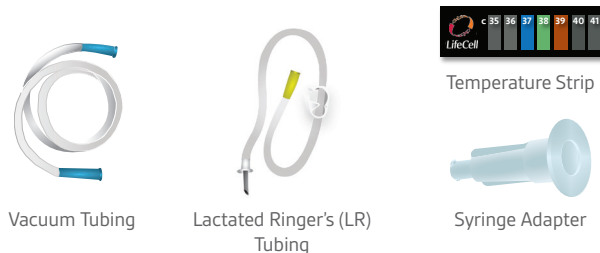


**REVOLVE ENVI™ 600 SYSTEM
DEVICE COMPONENTS**



USER-PROVIDED COMPONENTS



USEFUL TIPS

WASHING

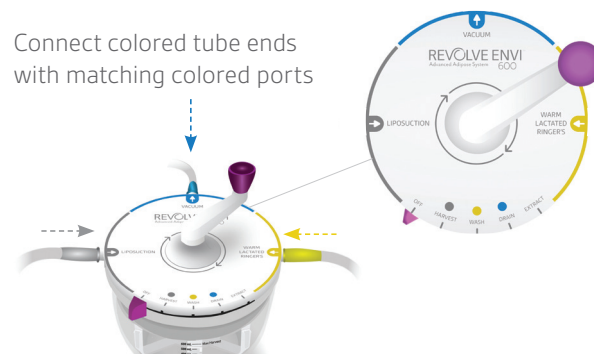
- Ensure LR solution is at appropriate temperature (37° to 39°C) by applying temperature strip to LR bag after warming
- Elevate warm LR solution bag relative to device for optimum wash/fill rate
- Use clamp provided on LR tubing to regulate desired volume of LR solution. Note: Device has built-in LR overflow prevention

EXTRACTION

- Turn handle clockwise in quarter turns to maximize graft retrieval
- If residual graft is present in device basket, select WASH, add small amount of LR solution, and gently swirl
- Transfer graft from extraction syringe to injection syringe by using provided syringe adapter

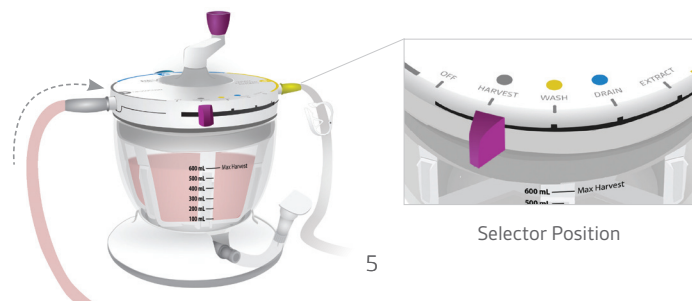
DEVICE SETUP

Connect colored tube ends with matching colored ports



HARVEST

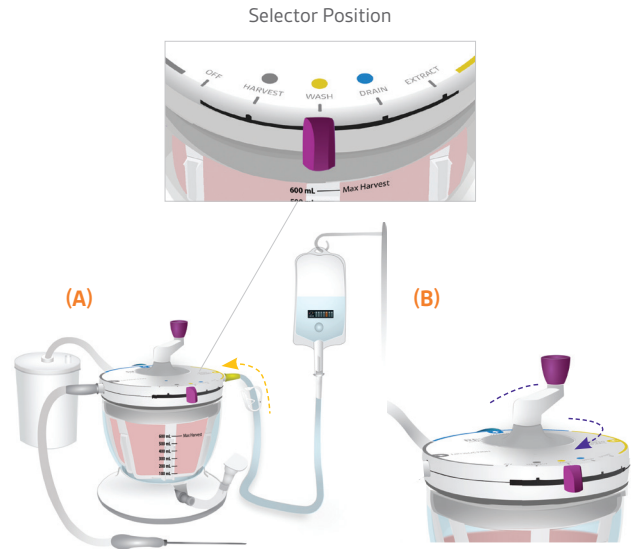
Confirm extraction port is closed. Move selector to HARVEST to collect lipoaspirate into the device



Selector Position

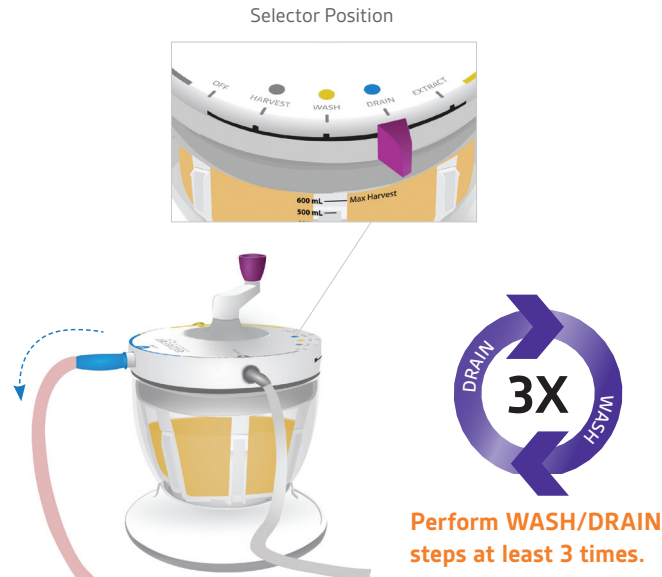
WASH

(A) Begin fill: spike warm LR bag, move selector to WASH and open pinch clamp to add warm LR. **(B) Continue fill and stir:** while adding LR, rotate handle clockwise until the amount of LR approximately equals the amount of tissue



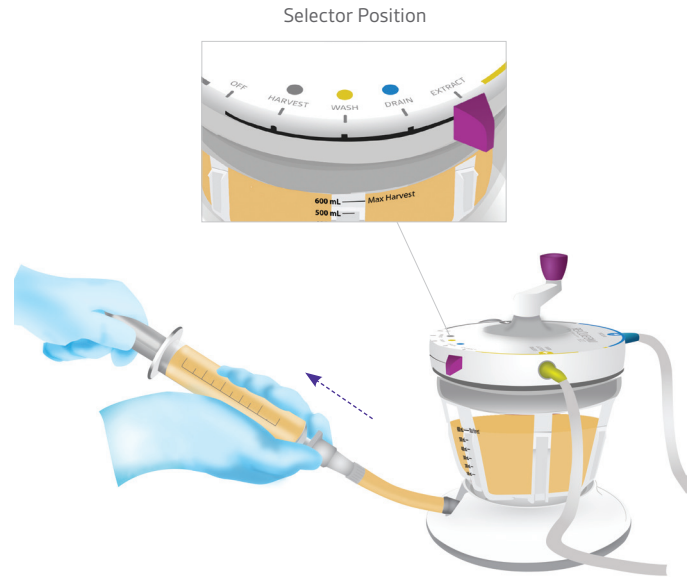
DRAIN

Move selector to DRAIN to suction fluid from canister. After last wash, leave selector on DRAIN to achieve desired aqueous content (~ 90 seconds)



EXTRACT

Move selector to EXTRACT, insert catheter tip or Toomey syringe tip into extraction port, and extract tissue



QUICK REFERENCE GUIDE



REVOLVE ENVI™
Advanced Adipose System 600

Please refer to Instructions for Use (IFU) for Indications, Contraindications, Warnings, Precautions, and Adverse Events at www.allergan.com/RevolveEnviIFU or call 1.800.367.5737.