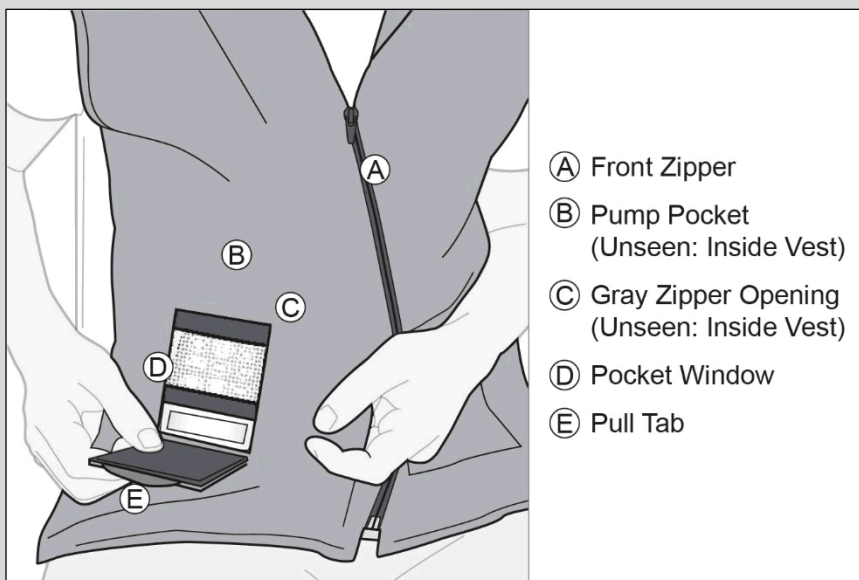


INSTRUCTIONS FOR USE

AbbVie Lightweight Vest

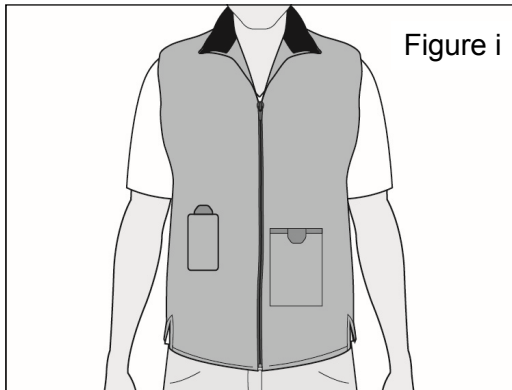
For use with CADD-Legacy® 1400 pump

This guide pertains only to the use of the AbbVie Lightweight Vest. For questions or problems, refer to these Instructions for Use or call support toll free at 1-844-386-4968.



About your Lightweight Vest:

The Lightweight Vest is designed to carry a CADD-Legacy[®] 1400 pump. This Lightweight Vest is intended for single-patient use only (see Figure i).



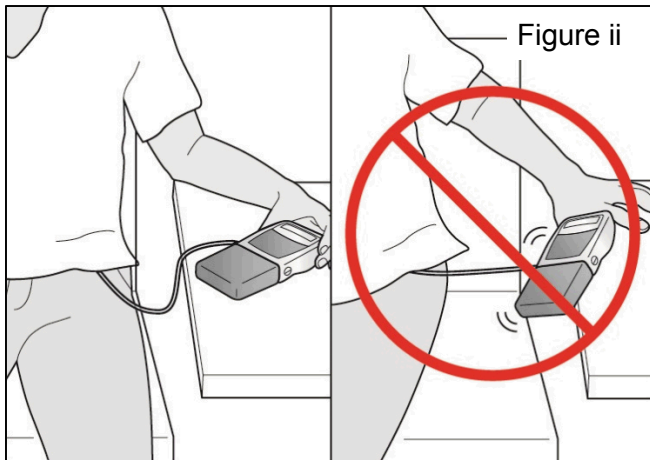
Caring for your Lightweight Vest:

Material: 89% polyester, 11% spandex

Care: Machine wash separately in cold water. Do not use bleach or fabric softeners. Tumble dry low. Do not iron. Do not dry clean.

Precautions:

- ⚠ **CAUTION:** When putting on the Lightweight Vest, ensure the pump is resting on a flat surface, and will not fall (see Figure ii). **If the pump is not completely secure, it may fall and injure you or damage the pump.**

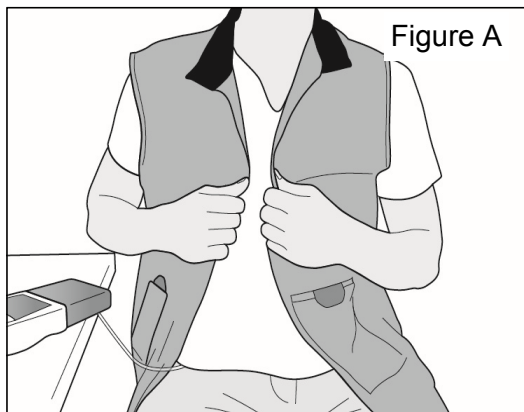


- ⚠ **CAUTION:** In the event the pump is dropped and no noticeable injury is suffered, inspect the pump for damage. In the event of pump damage contact your healthcare provider.

To begin using your Lightweight Vest:

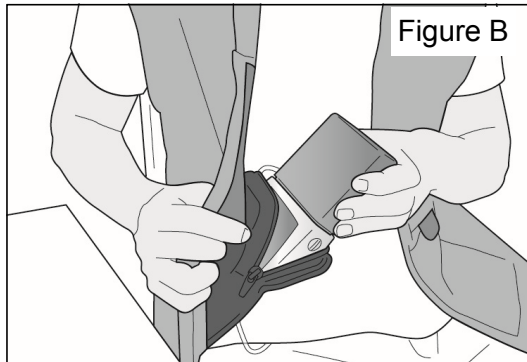
1) Put on the Lightweight Vest:

- ⚠ **CAUTION:** Make sure that the pump is stable on a flat surface, and will not fall while you put on the Lightweight Vest.
- ⚠ **CAUTION:** If you stand up to put on the vest, be sure the pump is secure so that it does not fall and injure you or cause damage to the pump.
 - a. Confirm that the Lightweight Vest is correctly oriented with the Pump Pocket on the inside of the Lightweight Vest.
 - b. Put on the Lightweight Vest without the pump (see Figure A).



2) Insert the pump into the Pump Pocket:

- a. Place the pump into the Pump Pocket with the screen on the bottom and facing out (see Figure B).

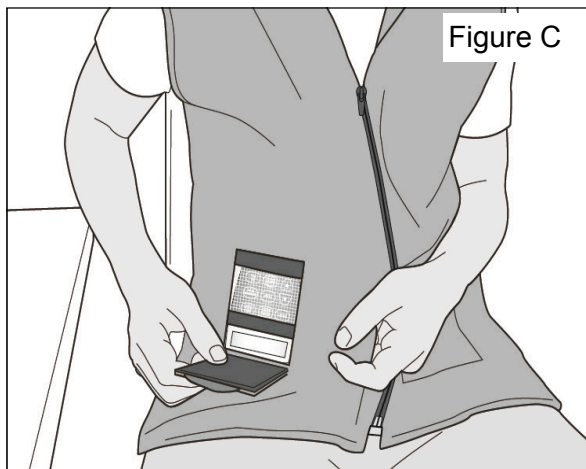


- b. Using the Pull Tab, confirm that both the display and the keypad are visible through the Pocket Window.
- c. Route the tubing to exit through the Gray Zipper Opening on the side of the Pump Pocket. Make sure that the tubing is not kinked.
- d. Zip the Pump Pocket shut.
- e. Zip up the Lightweight Vest to hold the pump securely against your body.

3) Interact with the pump (when needed):

- a. You can access the pump's keypad through the Pocket Window.
- b. Use the Pull Tab to view or cover the Pocket Window (see Figure C).

Note: You may need to unzip the Front Zipper to view the pump screen and keypad.



To take off your Lightweight Vest:

1) Remove the pump from the Pump Pocket:

⚠ **CAUTION:** Make sure that the pump is stable on a flat surface, and will not fall or be dropped while you take off the Lightweight Vest.

- a. Undo the Front Zipper of the Lightweight Vest.
- b. Pull the zipper to open the Pump Pocket.
- c. Remove the pump from the Pump Pocket.
- d. Place the pump on a flat surface.

2) Take off the Lightweight Vest:

- a. Remove the Lightweight Vest.

Disposing of your Lightweight Vest:

Dispose of the device according to your local government ordinances and recycling plans. Otherwise contact AbbVie for help with device disposal. Each device is for single patient use only and cannot be re-sold or used on multiple patients.

Explanation of Symbols (per ISO 15223-1):



Catalog number



Batch code



Manufacturer



Medical Device



Use-by date



rxabbvie.com

Consult *instructions for use* or consult *electronic instructions for use*



Caution



10634-04-01, 10634-04-02, 10634-04-03,
10634-04-04, 10634-04-05, 10634-04-06



Manufactured for:
AbbVie Inc.
1 North Waukegan Road
North Chicago, IL 60064 USA



rxabbvie.com

rxabbvie.com