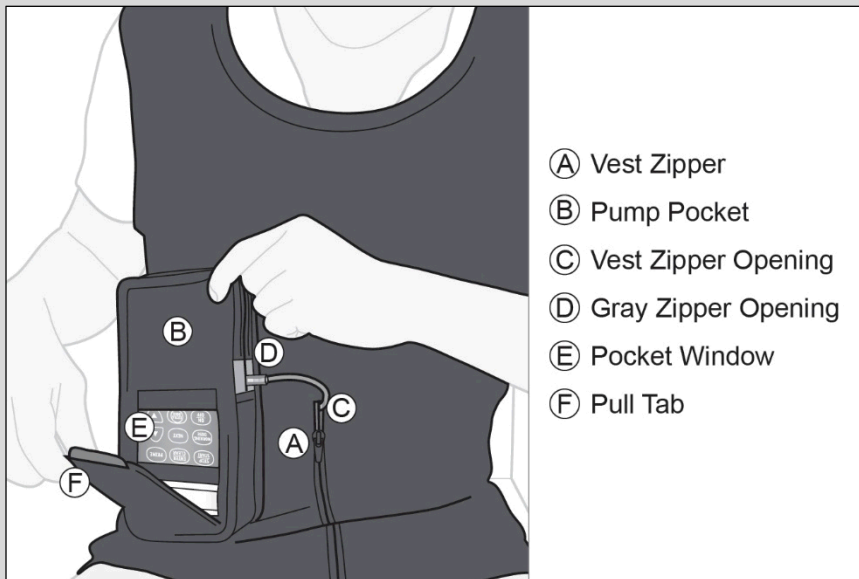


INSTRUCTIONS FOR USE

AbbVie Snug Vest

For use with CADD-Legacy® 1400 pump

This guide pertains only to the use of the AbbVie Snug Vest. For questions or problems, refer to these Instructions for Use or call support toll free at 1-844-386-4968.



About your Snug Vest:

The Snug Vest is designed to carry a CADD-Legacy[®] 1400 pump. This Snug Vest is intended for single-patient use only. The Snug Vest is intended to be an undergarment layer that holds the pump close to the body. The Snug Vest features a central zipper that rises midway up the torso for tube access (see Figure i).



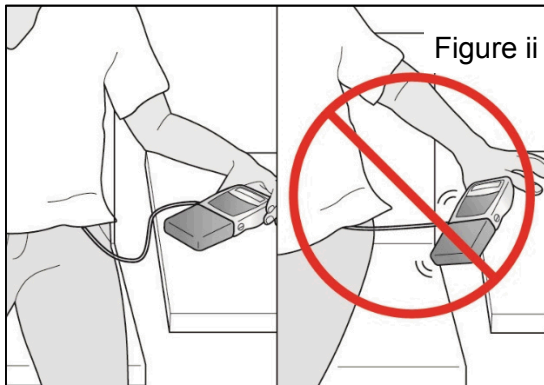
Material Information and Care Instructions:

Material: 92% nylon, 8% spandex

Care: Machine wash separately in cold water, hand wash, or dry clean.
Lay flat to dry.

Precautions:

- ⚠ **CAUTION:** When putting on the Snug Vest, ensure the pump is resting on a flat surface, and will not fall (see Figure ii). **If the pump is not completely secure, it may fall and injure you or damage the pump.**



- ⚠ **CAUTION:** In the event the pump is dropped and no noticeable injury is suffered, inspect the pump for damage. In the event of pump damage contact your healthcare provider.

To begin using your Snug Vest:

1) Put on the Snug Vest:

⚠ **CAUTION:** Make sure that the pump is stable on a flat surface, and will not fall while you put on the Snug Vest.

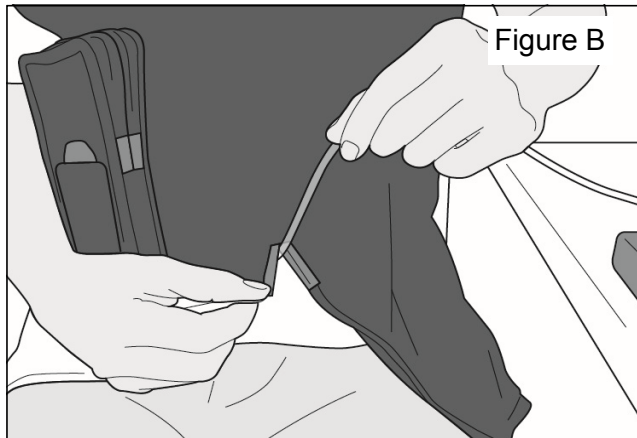
⚠ **CAUTION:** If you stand up to put on the vest, be sure the pump is secure so that it does not fall and injure you or cause damage to the pump.

a. Confirm that the Snug Vest is correctly oriented with the Pump Pocket on the outside of the Snug Vest (see Figure A).



b. Place the Snug Vest over your head without the pump.

- c. Route the tubing to exit the Snug Vest through the Vest Zipper Opening on the top of the Vest Zipper track (see Figure B). Confirm that the tubing is not kinked.



2) Insert the pump into the Snug Vest:

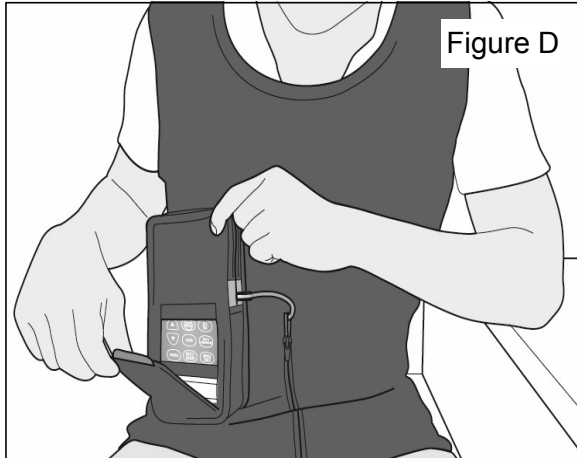
- a. Place the pump into the Pump Pocket with the screen on the bottom and facing out (see Figure C).



- b. Using the Pull Tab, confirm that both the display and the keypad are visible through the Pocket Window.
- c. Route the tubing to exit through the Gray Zipper Opening on the side of the Pump Pocket. Make sure that the tubing is not kinked.
- d. Zip the Pump Pocket shut.
- e. Zip the Vest Zipper.

3) Interact with the pump (when needed):

- a. You can access the pump's keypad through the Pocket Window (see Figure D).



- b. Use the Pull Tab to view or cover the Pocket Window.
Note: You may need to unzip the Vest Zipper to view the pump screen and keypad.

To take off your Snug Vest:

1) Remove the pump from the Pump Pocket:

⚠ CAUTION: Make sure that the pump is stable on a flat surface, and will not fall while you take off the Snug Vest.

- a. Pull the zipper to open the Pump Pocket.
- b. Remove the pump from the Pump Pocket.
- c. Place the pump on a flat surface.

2) Take off the Snug Vest:

- a. Unzip the Vest Zipper on the front of the Snug Vest.
This will loosen the fit of the Snug Vest and make the Snug Vest easier to remove.
- b. Remove the Snug Vest over your head.

Disposing of your Snug Vest:

Dispose of the device according to your local government ordinances and recycling plans. Otherwise contact AbbVie for help with device disposal. Each device is for single patient use only and cannot be re-sold or used on multiple patients.

Explanation of Symbols (per ISO 15223-1):



Catalog number



Batch code



Manufacturer



Medical Device



Use-by date



rxabbvie.com

Consult *instructions for use* or consult *electronic instructions for use*



Caution



10633-04-01, 10633-04-02, 10633-04-03,
10633-04-04, 10633-04-05, 10633-04-06



Manufactured for:
AbbVie Inc.
1 North Waukegan Road
North Chicago, IL 60064 USA



rxabbvie.com

rxabbvie.com